

The Avery Property  
0 County Road 74  
Gibson, Georgia 30810

34.04 feet of road Frontage

Mobile Homes permitted

MLS#308769

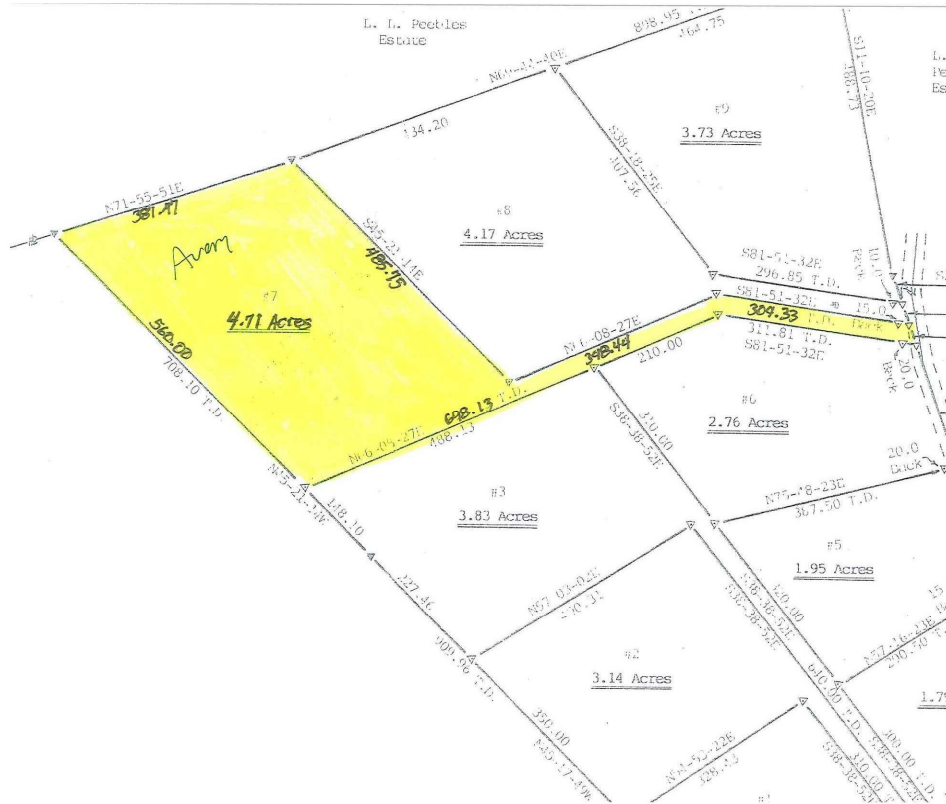
Plat Book: 1 Plat page: 44

\$16,956  
\$3600 Per Acre

Taxes: \$148.12 (2008)

4.71 ± Acres

Parcel #: 028-127



Large wooded lot that would make a great home site.

**DIRECTIONS:**

From Gibson take Hwy 102 toward Wrens (East) go approximately 2.5 miles and turn left on Usry Mill Road. Travel approximately 2 miles to Lampp Road turn left go approximately 1 mile and look for sign on property.

(The above data, although believed to be accurate, is not guaranteed by the listing company.)



PO Box 550 114 Main Street  
Thomson, GA 30824  
706-595-3216 or 800-637-0881  
706-595-3244 Fax



GA RE Lic.# H - 11348

www.wilsonrealtor.com or email realestate@wilsonrealtor.com