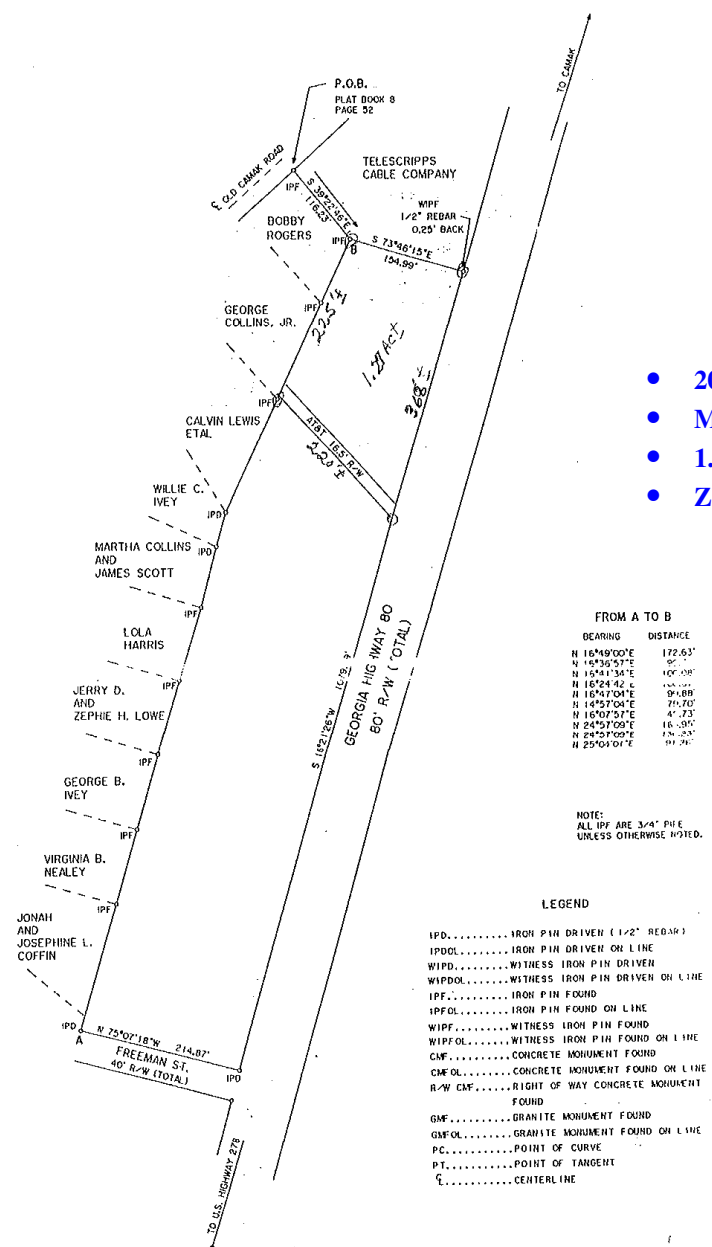
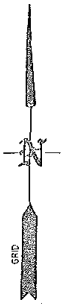


English Property
5.04 acres on Georgia Hwy 80
Warrenton, GA 30828

\$ 450 per Front Foot

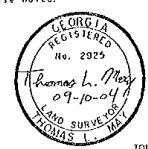
- **200' Minimum Front Feet**
- **Must Start at South End of Property to Divide**
- **1.27 acres +/- \$450 per Front Foot**
- **Zoned R-1 (Residential)**

MLS # 299251 (1.27 acres)
 MLS # 299250 (5.04 acres)



SURVEYED FOR:
PIERCE R. ENGLISH
 5.04 ACRES
 LOCATED IN: **CITY OF WARRENTON**
 425th G.M.D. **WARREN COUNTY, GEORGIA**
 SCALE: 1" = 100 FEET
 DATE: AUGUST 4, 2004

Field data ERROR OF CLOSURE 1/25,336.
 Angle observations per point of
 Traverse adjusted by LEAST SQUARES.
 MAP CHECK ERROR OF CLOSURE 1/300,751.
 This survey was performed using a Topcon GPT 2003 surveying
 instrument. The angles were obtained by one position (DPR).
 Magnetic orientation by observation or data of record
 unless otherwise noted. There are no NGS monuments within
 500 feet of this survey unless otherwise noted.
 In my opinion, this plot is a
 correct representation of the
 land plotted and has been
 prepared in conformity with
 the minimum standards and
 requirements of law, surveyed
 by CSRA Land Surveyors, LLC
 100 Allen Street
 Warrenton, Georgia 30828.
 (706) 460-9700



Thomas L. May
 GA, RLS H2925

City of Warrenton and Bypass P.L.L. BEIRACT14

(The above data, although believed to be accurate, is not guaranteed by the listing company.)



PO Box 550 114 Main Street
 Thomson, GA 30824
 706-595-3216 or 800-637-0881
 706-595-3244 Fax



www.wilsonrealtor.com or email realestate@wilsonrealtor.com

GARE Lic.# H - 11348