



637 MLK, Jr. Street
THOMSON, GA

~~\$15,000~~ Reduced to \$9,500

MLS # 342201

Cottage home with approximately 740 square feet on small lot
(.07 acre)

Asbestos shingle siding.

Front Porch.

LIVING ROOM 19'6" x 15'2" with paneled walls, carpet, ceiling fan, space heater and window a/c unit.

BEDROOM 17'2" x 13'7" with paneled walls, carpet, space heater.

Eat-in KITCHEN 10'5" x 10'2" with electric stove.

1 Bathroom.

Storage shed.

Public utilities: City water, sewer and natural gas, Georgia Power on electric.

New sewer and water lines installed in 2005.

There is no where to park a car on this lot.

(The above data, although believed to be accurate, is not guaranteed by the listing company.)



PO Box 550 114 Main Street
Thomson, GA 30824
706-595-3216 or 800-637-0881 706-595-3244 Fax
www.wilsonrealtor.com or email realestate@wilsonrealtor.com



GA RE Lic.# H - 11348





DIRECTIONS:

From downtown Thomson turn right on Gordon Street (GA 150). Turn left on MLK, Jr. Street. House on left after stop sign.

LEGAL DESCRIPTION:

Deed Book, 412, page 181 / Plat Book G, page 85 / 2010 Taxes \$168.23

(The above data, although believed to be accurate, is not guaranteed by the listing company.)



PO Box 550 114 Main Street
Thomson, GA 30824
706-595-3216 or 800-637-0881 706-595-3244 Fax
www.wilsonrealtor.com or email realestate@wilsonrealtor.com



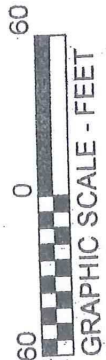
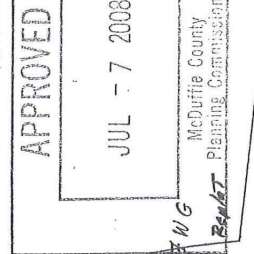
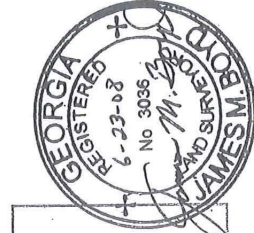
GA RE Lic.# H - 11348



CALL TABLE FOR MLK JR STREET

Course	Bearing	Distance
L1	N 08°16'17" W	31.90'
L2	Rad: 927.98'	Arc: 39.62'
	Tan: 19.84'	CA: 6°55'18"
L3	Chd: N 14°56'55" W	39.80'
	Rad: 327.98'	Arc: 37.55'
	Tan: 18.79'	CA: 6°33'34"
L4	Chd: N 21°41'21" W	37.53'
	N 28°40'28" W	46.25'

FIELD SURVEY PERFORMED ON JUNE 16, 2008
 PLAT DRAWN ON JUNE 23, 2008



BOYD SURVEYING
AND LAND INVESTMENTS LLC
 200 N. MAIN ST.
 TENNILLE, GA

JAMES M. BOYD
 (478)247-5002

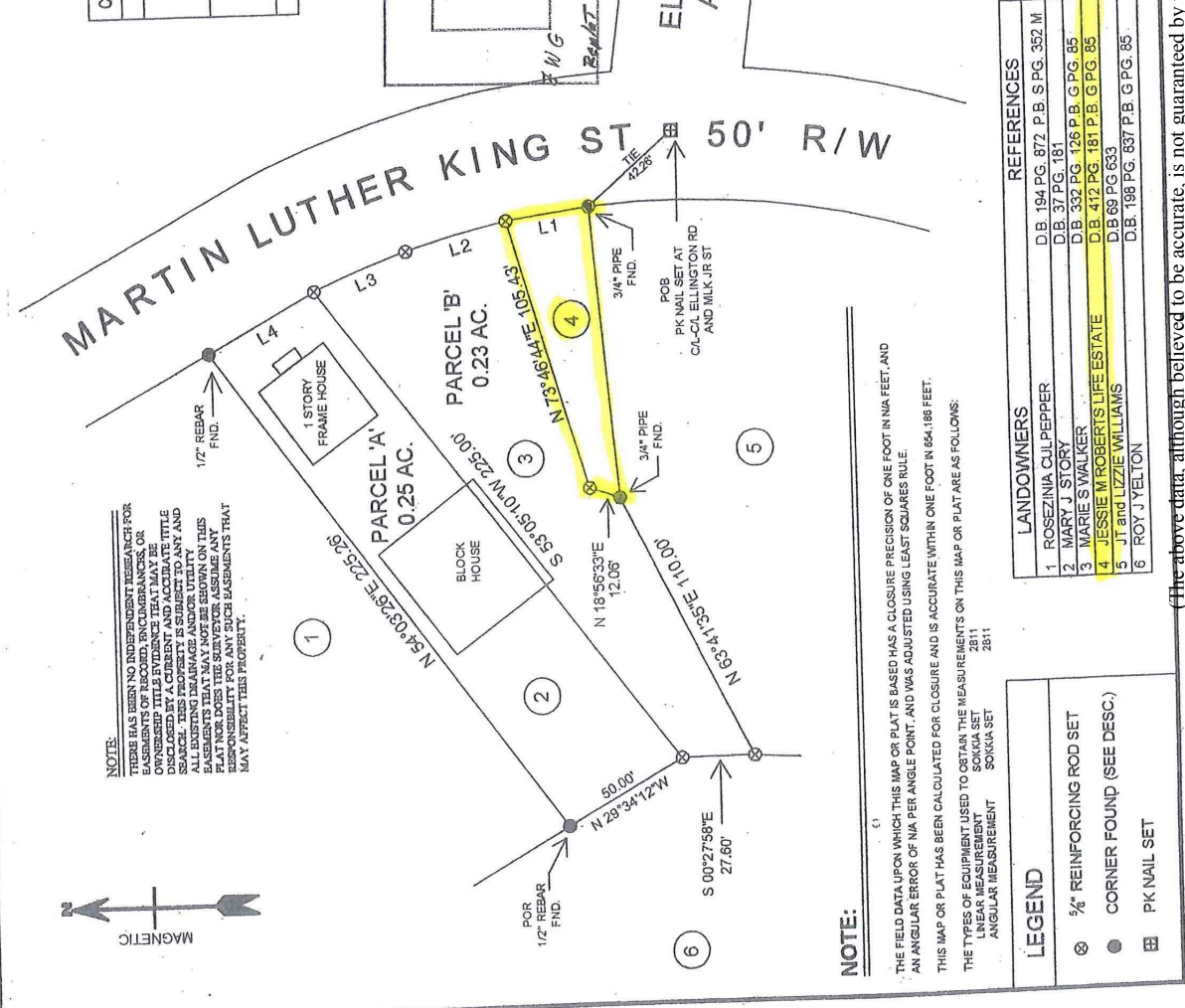
SURVEY FOR
MARIE S. WALKER

LOCATED IN
 CITY OF THOMSON
 McDUFFIE COUNTY, GA

134th G.M.D
 SCALE: 1 IN. = 60 FT.
 DATE: June 23, 2008

DRAWN BY: LDB
 PLAT No.: 0804G

MARTIN LUTHER KING ST 50' R/W



LANDOWNERS	REFERENCES
1 ROSEZINIA CUL PEPPER	D.B. 194 PG. 872 P.B. S PG. 352 M D.B. 37 PG. 181
2 MARY J STORY	D.B. 332 PG. 126 P.B. G PG. 85
3 MARIE S WALKER	D.B. 412 PG. 181 P.B. G PG. 85
4 JESSIE W ROBERTS LIFE ESTATE	D.B. 68 PG. 833
5 JT and LIZZIE WILLIAMS	D.B. 198 PG. 837 P.B. G PG. 85
6 ROY J YELTON	

LEGEND
⊙ 5/8" REINFORCING ROD SET
● CORNER FOUND (SEE DESC.)
⊞ PK NAIL SET

(The above data, although believed to be accurate, is not guaranteed by the listing company.)



PO Box 550 114 Main Street
 Thomson, GA 30824

706-595-3216 or 800-637-0881 706-595-3244 Fax
 www.wilsonrealtor.com or email realestate@wilsonrealtor.com



GA RE Lic.# H - 11348

