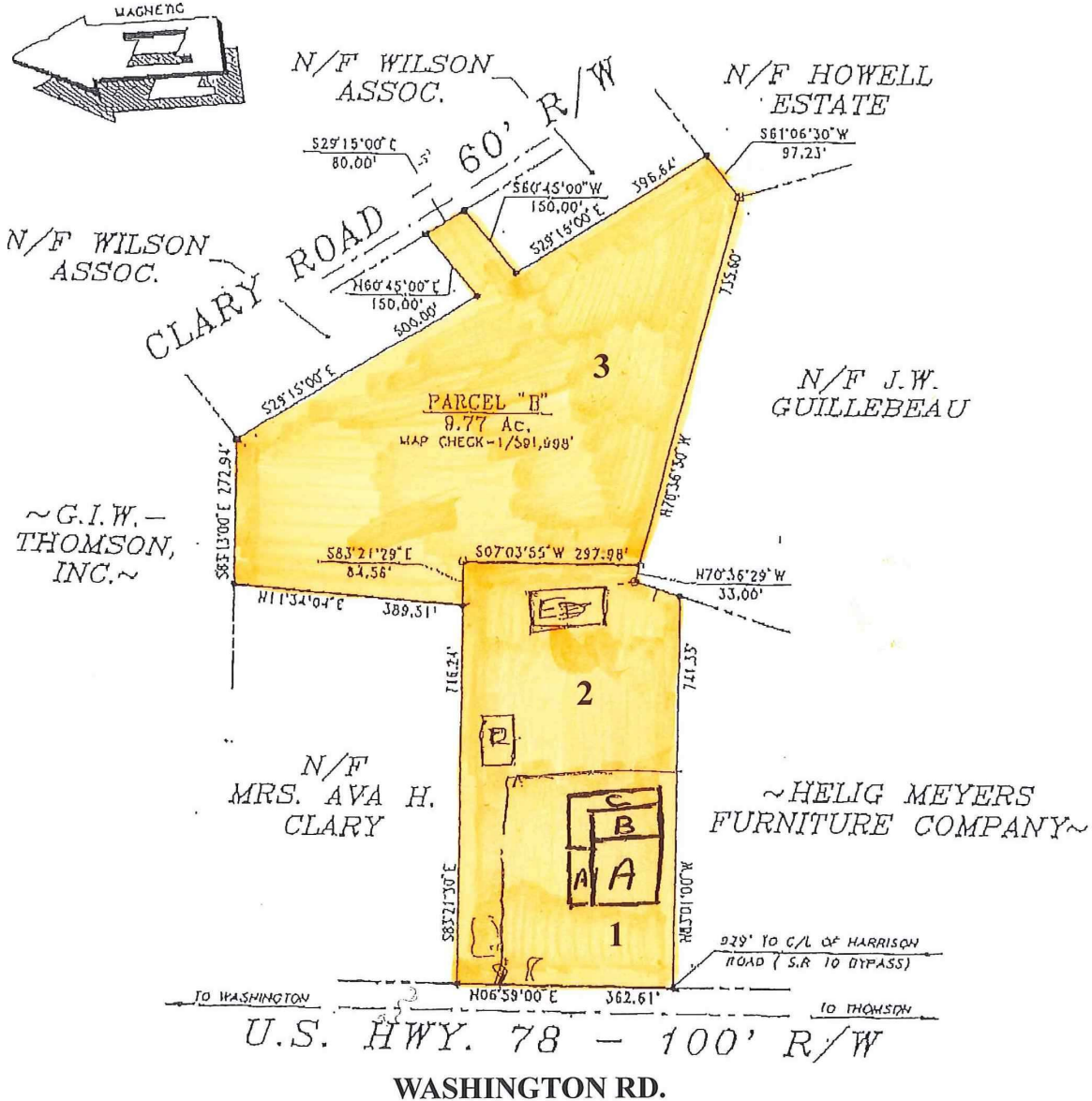


**The Fred's / Lowes Building**  
**1130 Washington Rd**  
**Thomson, GA**

**Key's to building located in the Office**

- Option 1 - Tract 1 - **\$750,000** - Includes 32,904 sq. ft. building (including 21,244 sq. ft. heat/air conditioning) Ceiling height 13 feet and 24 feet.  
 Option 2 - Tract 1, & 2 - **\$900,000** - Includes all of the above and 2 implement sheds (40'x150') (60'x125') 6.63 Acres.  
 Option 3 - Tract 1, 2, & 3 - **\$950,000** - Includes all the above and 9.77 ± acres.



(The above data, although believed to be accurate, is not guaranteed by the listing company.)



PO Box 550 114 Main Street  
 Thomson, GA 30824  
 706-595-3216 or 800-637-0881  
 706-595-3244 Fax



www.wilsonrealtor.com or email realestate@wilsonrealtor.com

GARE Lic.# H - 11348